



NEW MODEL in assortment - in sale from September 2009

Boiler for lump wood VERNER V140 EXTRA



On the basis of your requests – our customers – **we have constructed brand new generation of boilers for lump wood, VERNER EXTRA boilers.**

Boiler **VERNER V140 EXTRA** has rated capacity of **14kW**.

This boiler is ideal connection of great functionality, high quality and aesthetic design - these are the characteristics, which VERNER company traditionally guarantee for its customers.

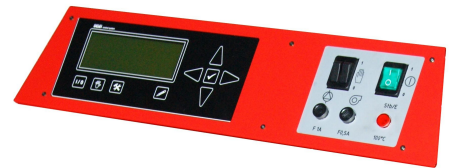
We will offer the new generation of boilers VERNER EXTRA with **electronic regulator**.

High efficiency and quality of burning ensure economic operation with the minimal stress for the environment.

VERNER company has multiyear experience with anticorrosive solutions. Regarding VERNER EXTRA boilers generation, we suppose markedly longer lifetime than in common boilers.

Main advantages of boilers VERNER V140 EXTRA

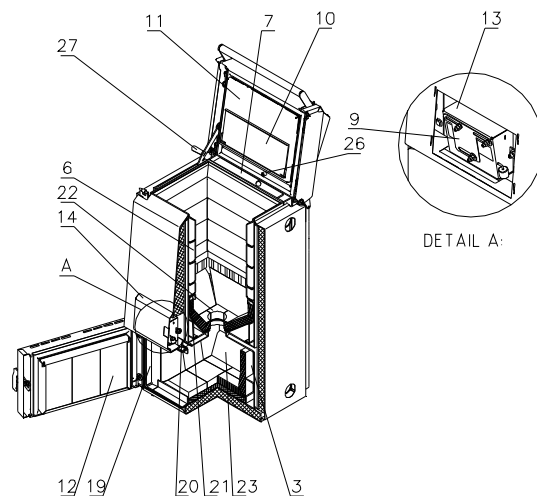
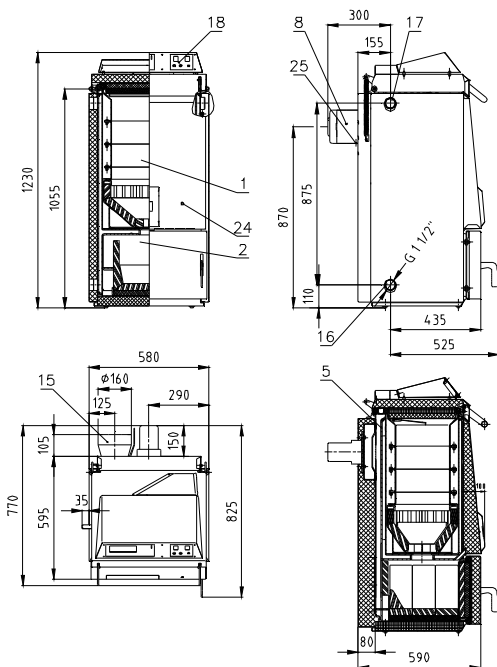
- **High-quality burning** – thanks to the primary air supply to the bottom part of the feeding chamber, fuel can burn equally – burning is high-quality for all the time during the burnup of the fuel load with the very well-balanced output of the boiler.
- **Long lifetime** – during construction of the boiler, we have maximally used all our experience with anticorrosive solutions and by this fact, we have markedly prolonged the lifetime of the boiler.
- **Comfortable attendance** – thanks to the great adjustability and the system of automatic stable heat operation, the number of fire up processes per season is many times smaller, than in common boilers. Thanks to the long burning time, it is enough to feed the fuel in average 2-3 times per day and it is not at the expense of the efficiency and quality of the burning. Construction of the boiler makes possible the simple cleaning and ash removing. Also the upper feeding door in its full cross section makes possible comfortable feeding of the fuels with higher portion of friable parts. Thanks to the great construction, the problem with the smoking to the boiler-room during the feeding of these friable fuels is also eliminated.
- **Usage of storage tanks** – the combination with the storage tank is considerably cheaper than for common boilers – connection can be realized by the gravity circle – it is not necessary to install expensive mixing armature etc. The boiler VERNER V140 EXTRA makes possible to operate the boiler also without storage tank and it is not at the expense of the lifetime or economy of the operation. Thanks to the great adjustability and stable heat operation of the boiler, it is possible to use storage tank with the half capacity, than which is necessary for the common boilers.
- **Low operation expenses** – high efficiency, adjustability, automatic stable heat operation and also high-quality isolations of the boiler save the fuel and attendance time. Ability to the gravity connection (without pump) saves the expenses for electricity and the connection with the storage tank solves economically and without any problems cooling of the boiler during power cut. Thanks to the advanced conceptual elements, there are low expenses for the parts, which yield to wear (adapting pieces, gaskets, etc.).
- **Ability of the operation during power cut** – the boiler can be in emergency operated only thanks to the chimney draught.
- **We are just preparing „Effect of open flame“ in living room** – (boiler design for placing) which makes possible to complete the interior by the very requested effect of fire, but keeps all the advantages of the gasification boiler.



PARAMETERS OF THE BOILER VERNER V140 EXTRA:

| | |
|---|---|
| Rated capacity | 14 kW (for objects with heat losses 8-16kW) |
| Adjustability by continuous operation | 7 - 14 kW |
| Adjustability by outstanding operation | 2 – 7 kW |
| Efficiency | up to 91% |
| Feeding chamber capacity | 55 l |
| Weight | 330kg |
| Maximum overpressure | 3 bars |
| Electric input | max. 40 W during operation, 60 W during fuel loading and heat up process |
| Burning time of full standard hopper for 14kW | 3 h – common lump wood (soft) 4 h – high-quality lump wood (hard) 5 h – wood briquettes |
| Fuel | dry wood (moisture max. to 20%) – diameter up to 15cm, length up to 34cm wood briquettes dry wood chips or sawdust |
| Height | 1230 mm |
| Width | 580 mm |
| Total depth (including controls and ventilator) | 825 mm |

SCHEME OF THE BOILER:



- 15) outlet combustion gas throat
- 16) inlet sleeve G 6/4" (inner)
- 17) outlet sleeve G 6/4" (inner)
- 18) regulation board
- 19) side exchanger cover
- 20) eye sight with ceramic glass
- 21) side adapting pieces of the feeding chamber
- 22) adapting piece – jet
- 23) closing adapting piece
- 24) emergency thermoregulator
- 25) flue gases temperature sensor
- 26) lambda sensor (if it is part of the delivery)
- 27) hold-down stanchion

LEGEND:

- 1) feeding chamber
- 2) burning chamber
- 3) side flue gases exchanger
- 4) rear flue gases exchanger
- 5) boiler body
- 6) protective shell of the feeding chamber
- 7) ledge of the rear exchanger
- 8) ventilator
- 9) shutter of the I. and II. air rate
- 10) hinged shutter
- 11) feeding door
- 12) bottom door
- 13) air supply box
- 14) air supply cover

VERNER a. s.

Sokolská 321, 549 41 Červený Kostelec,
Tel.: +420 491 465 024, +420 491 462 135
email: info@verner.cz

www.verner.cz